



GMT MONTHLY MEMBERSHIP PROGRESS REPORT

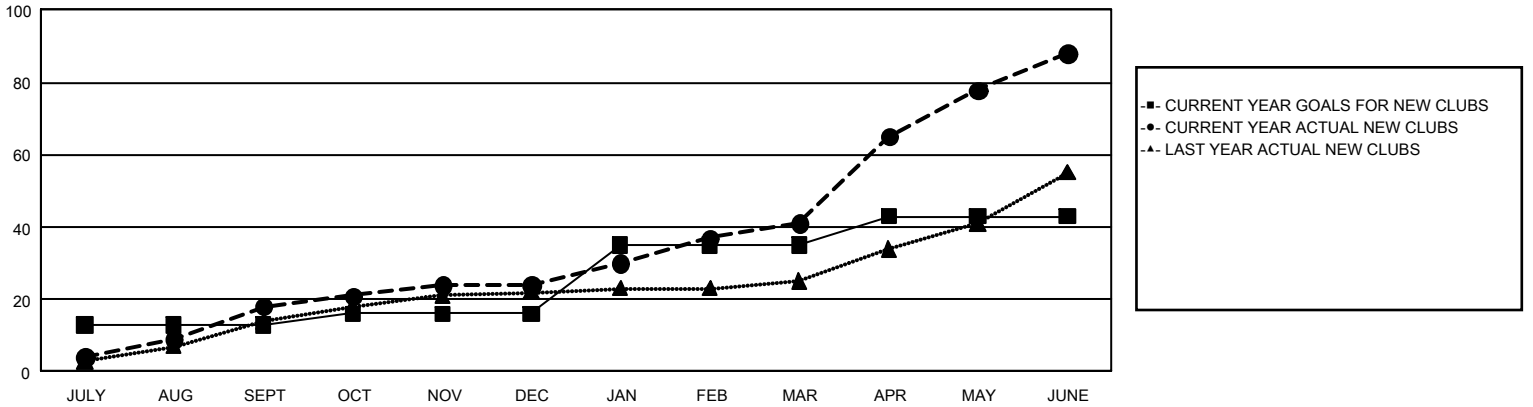
GAT Constitutional Area 5 - English Speaking Areas

Results as of: 6/30/2024

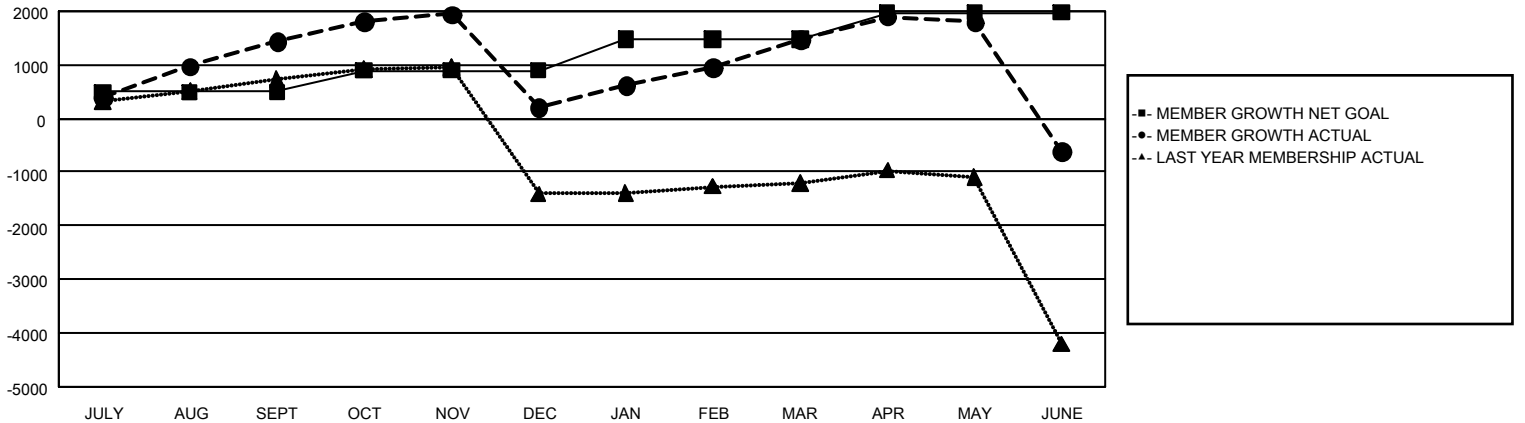
REPORT DOES NOT INCLUDE CLUBS IN UNDISTRICTED AREAS.

Clubs				Members			
RESULTS FOR 2023-2024				RESULTS FOR 2023-2024			
QUARTER	NEW CLUB GOAL	NEW CLUBS	DROPPED CLUBS	QUARTER	MEMBER GROWTH NET GOAL	MEMBER GROWTH ACTUAL	DROPPED MEMBERS ACTUAL (including transfers)
JULY/AUG/SEPT	13	18	7	JULY/AUG/SEPT	495	2,678	1,025
OCT/NOV/DEC	3	6	38	OCT/NOV/DEC	400	1,546	2,470
JAN/FEB/MAR	19	17	13	JAN/FEB/MAR	583	2,361	635
APR/MAY/JUNE	8	47	32	APR/MAY/JUNE	500	2,243	4,009

GOALS AND ACTUAL NEW CLUBS CUMULATIVE



GOALS AND ACTUAL MEMBERS CUMULATIVE



DROPPED CLUBS: 90	956 CLUBS OF 1,392 ADDED 1 OR MORE NEW MEMBERS	<u>GENDER DISTRIBUTION</u>	
<u>DROPPED MEMBERS</u>		MALE	19,919 (53.47%)
DECEASED	187	FEMALE	17,269 (46.35%)
CLUB CANCELLED	1,368	TOTAL FAMILY UNIT MEMBERS 7,787	
OTHER	6,575		
TOTAL	8,130		
CLICK HERE FOR CUMULATIVE MEMBERSHIP DATA			